

Marking, PN, Datecode
 RoHS Compliant
 UL Recognition

AP0010-1011 RoHS / WEEE Compliant Pb FREE
 DATECODE



- NOTES:
- WHEN ORDERING OR REFERENCING THIS PART USE, CECO CONNECTOR PART NUMBER **AP0010-1011**.
 - MATERIAL: INSULATOR: 30% GLASS FILLED HIGH TEMP. THERMO PLASTIC
 COLOR: BLACK
 RATING: U.L. 94 V - 0 RATED.
 CONTACTS: COPPER ALLOY
 CURRENT RATING SIGNAL: 3A DC WITH <30°C TEMPERATURE RISE
 CURRENT RATING POWER: 16A DC WITH <30°C TEMPERATURE RISE
 FINISH: SEE NOTE 4. PLATING SPECIFICATION
 - PARTS TO MARKED WITH PART NUMBER AND CECO LOGO AND DATE CODE (YRWK).
 - PLATING SPECIFICATION: "1"
 1 - .000050-.00010 [.00127-.00254] NICKEL UNDERPLATE ALL OVER;
 .000030[.00076] MIN. GOLD IN MATING AREA "M", ENVIRONMENTAL PROTECTIVE COATING ALL OVER, RoHS AND JIG COMPLIANT

PART NUMBER DESCRIPTION

SERIES PREFIX: **AP0010-1011**
 LOADING CODE SUFFIX: **1011**
AP0010-1011
 LOADING CODE: **1011**
 (-1011 PARTIAL LOADED / RoHS COMPLIANT)
 CONNECTOR SERIES: **AP0010 - ATCA Rt. ANGLE MALE CONNECTOR WITH MOUNTING SCREW HOLES**

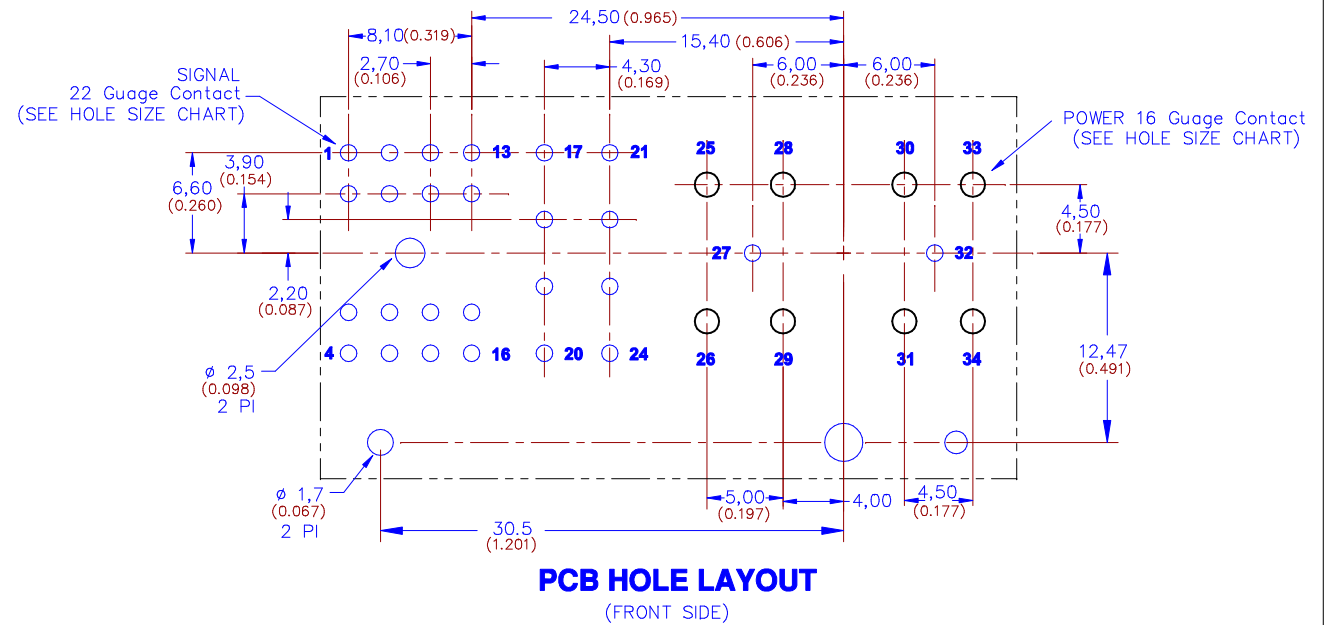


This part is **RoHS** and **WEEE** Compliant.
 2002/95/EC 2002/96/EC

DIMENSIONS ARE IN MILLIMETER AND (INCHES) REFERENCE ONLY
 TOLERANCES UNLESS OTHERWISE SPECIFIED
 X.X = ±0.3 X.XX = ±0.15 ANGLES = ±2°
 THIS DRAWING IS COMPUTER GENERATED NOT TO BE MANUALLY UPDATED.
 THIS DRAWING AND / OR SPECIFICATION IS THE PROPERTY OF COMPONENT EQUIPMENT CO., INC. IT IS ISSUED IN STRICT CONFIDENCE, AND SHALL NOT BE REPRODUCED, OR COPIED, OR DISCLOSED TO OTHERS, OR USED AS THE BASIS FOR THE MANUFACTURE OR SALE OF APPARATUS WITHOUT THE PERMISSION OF THE OWNER.

COMPONENT EQUIPMENT CO., INC.			
CECO			
3050 Camino Del Sol Oxnard, CA 93030 (805)484-0149 FAX (805)388-2849			
DATE	09/12/2007	DRAWN	S. BLAISE
APPROVED	T.C.	CHECKED	APPROVED
TITLE: ATCA Rt ANGLE MALE PRESSFIT CONNECTOR WITH MOUNTING SCREW HOLES, RoHS COMPLIANT			
CUSTOMER / PART NUMBER	REV.	CAGE CODE	SHEET 1 OF 2
ORMS7	AP0010_0		A

CONTACT / INSERT LOADING INFORMATION FOR LOADING CODE 1011							
QTY	CONTACT / INSERT NUMBER	CONTACT TYPE	POSITIONS LOADED	"M" MATE HEIGHT	"T" TAIL LENGTH	SYMBOL	
4	NOT LOADED	SIGNAL 22 Gauge	1-4	0,0 (0.0)	0,0 (0.0)	⊘	
5	PCA12212-1AK		8, 12, 16, 20, 24	6.15 (0.242)	3,9 (0.154)	+	
3	PCA12222-1AK		7, 11, 15			+	
2	PCA12232-1AK		19, 23			+	
2	PCA12241-1AK		27, 32			△	
2	PCA12252-1AK		18, 22			+	
3	PCA12262-1AK		6, 10, 14	+			
5	PCA12272-1AK		5, 9, 13, 17, 21	+			
1	PCA11611-1AK		POWER 16 Gauge	34	8.8 (0.346)	3,9 (0.154)	□
3	PCA 11613-1AK			26, 29, 31	14.25 (0.561)		×
1	PCA11622-1AK	33		11.25 (0.443)	△		
3	PCA11623-1AK	25, 28, 30		14.25 (0.561)	×		
TOTAL LOADED	26						



HOLE SIZE CHART
SIGNAL 22 Gauge Contact

FINISHED PCB HOLE SIZE
 $\phi 1,09 \pm 0,05$
 $(0,043 \pm 0,002)$

RECOMMENDED PLATING
 $0,85 \pm 0,15 \mu$ (0.000033 \pm 0.000006)
 Immersion tin over
 25μ (0.0010) min. copper

DRILL HOLE SIZE
 $\phi 1,19 \pm 0,05$
 $(0,047 \pm 0,002)$

HOLE SIZE CHART
POWER 16 Gauge Contact

FINISHED PCB HOLE SIZE
 $\phi 1,600 \pm 0,090 - 0,060$
 $(0,063)$

RECOMMENDED PLATING
 $0,85 \pm 0,15 \mu$ (0.000033 \pm 0.000006)
 Immersion tin over
 25μ (0.0010) min. copper

DRILL HOLE SIZE
 $\phi 1,73 \pm 0,05$
 $(0,068 \pm 0,002)$

PART NUMBER DESCRIPTION

SERIES PREFIX: **AP**
 LOADING CODE SUFFIX: **0010-1011**

LOADING CODE
 (-1011 PARTIAL LOADED / RoHS COMPLIANT)

CONNECTOR SERIES (AR0010 - ATCA VERT. FEMALE CONNECTOR WITH MOUNTING SCREW HOLES)



DIMENSIONS ARE IN MILLIMETER AND (INCHES as REFERENCE ONLY)
 TOLERANCES UNLESS OTHERWISE SPECIFIED
 X.X = $\pm 0,3$ X.XX = $\pm 0,15$ ANGLES = $\pm 2^\circ$

THIS DRAWING IS COMPUTER GENERATED NOT TO BE MANUALLY UPDATED.

THIS DRAWING AND / OR SPECIFICATION IS THE PROPERTY OF COMPONENT EQUIPMENT COMPANY, INC. IT IS ISSUED IN STRICT CONFIDENCE, AND SHALL NOT BE REPRODUCED, OR COPIED, OR DISCLOSED TO OTHERS, OR USED AS THE BASIS FOR THE MANUFACTURE OR SALE OF APPARATUS WITHOUT THE PERMISSION OF THE OWNER.

COMPONENT EQUIPMENT CO., INC.
CECO 3050 Camino Del Sol
 Oxnard, CA 93030
 (805)484-0149 FAX (805)388-2849

DATE 09/12/2007 DRAWN S. BLAISE APPROVED T.C.
 SCALE 2:1 AND NOTED CHECKED APPROVED

TITLE ATCA Rt ANGLE MALE PRESSFIT CONNECTOR WITH MOUNTING SCREW HOLES, RoHS COMPLIANT DWG SIZE **A1**

CUSTOMER / PART NUMBER REV. CAGE CODE SHEET 2 OF 2 REV. DRAWING NO. AP001_a A

ORMS7

Customer: OECO Job #: OECO Part #: File Name: Customer Part #: Rev: OECO Part #: Rev: OECO Part #: Rev: