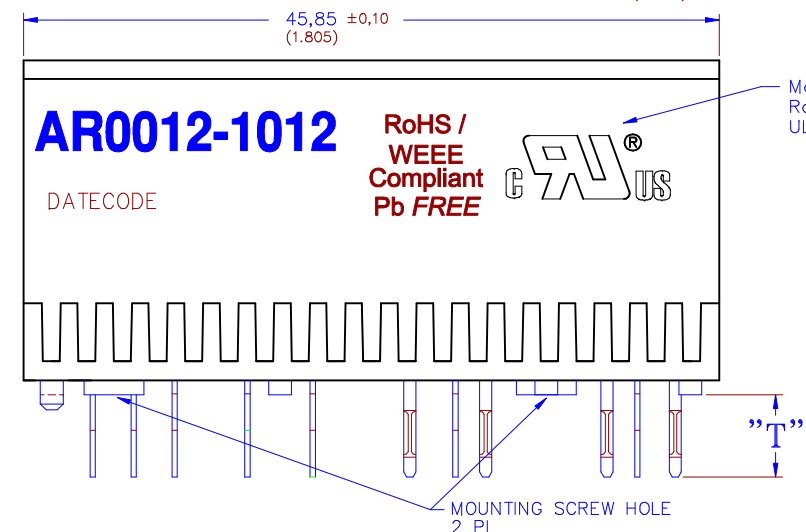
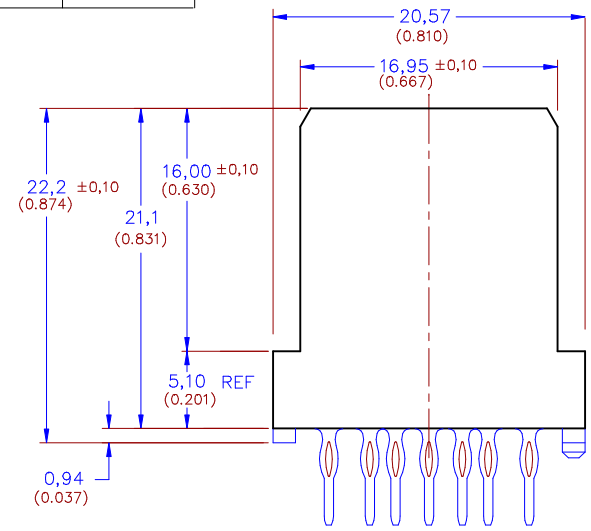
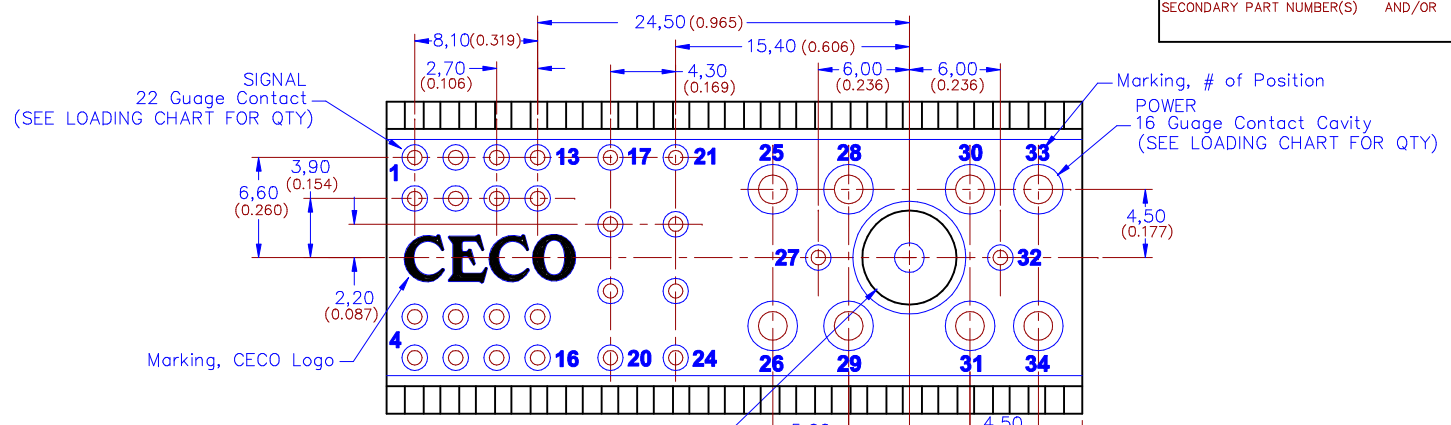


**CONTACT / INSERT LOADING INFORMATION FOR LOADING CODE 1011**

QTY	CONTACT / INSERT NUMBER	CONTACT TYPE	POSITIONS LOADED	"T" TAIL LENGTH
4	<b>NOT LOADED</b>	SIGNAL	1-4	0,0 (0,0)
22	<b>PCA22202-1</b>	SIGNAL 22 Gauge	5-24, 27, 32	5,4 (0,213)
8	<b>PCA21601-1</b>	POWER 16 Gauge	25, 26, 28, 29, 30, 31, 33, 34	5,9 (0,234)

TOTAL LOADED 30



- NOTES:
- WHEN ORDERING OR REFERENCING THIS PART USE, CECO CONNECTOR PART NUMBER **AR0012-1012**.
  - MATERIAL: INSULATOR: 30% GLASS FILLED HIGH TEMP. THERMO PLASTIC  
 COLOR: BLACK  
 RATING: U.L. 94 V - 0 RATED.  
 CONTACTS: COPPER ALLOY  
 CURRENT RATING SIGNAL: 3A DC WITH <30°C TEMPERATURE RISE  
 CURRENT RATING POWER: 16A DC WITH <30°C TEMPERATURE RISE
  - FINISH: SEE NOTE 4. PLATING SPECIFICATION  
 PARTS TO MARKED WITH PART NUMBER AND CECO LOGO AND DATE CODE (YRWK).
  - PLATING SPECIFICATION: "1"  
 1 - .000050-.00010[.00127-.00254] NICKEL UNDERPLATE ALL OVER;  
 .000030[.00076] MIN. GOLD IN MATING AREA "M", ENVIRONMENTAL  
 PROTECTIVE COATING ALL OVER, RoHS AND JIG COMPLIANT  
 SCALE IN MILLIMETERS

**PART NUMBER DESCRIPTION**

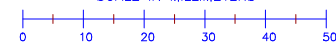
SERIES PREFIX **AR** LOADING CODE SUFFIX **0012**  
**AR0012-1012**

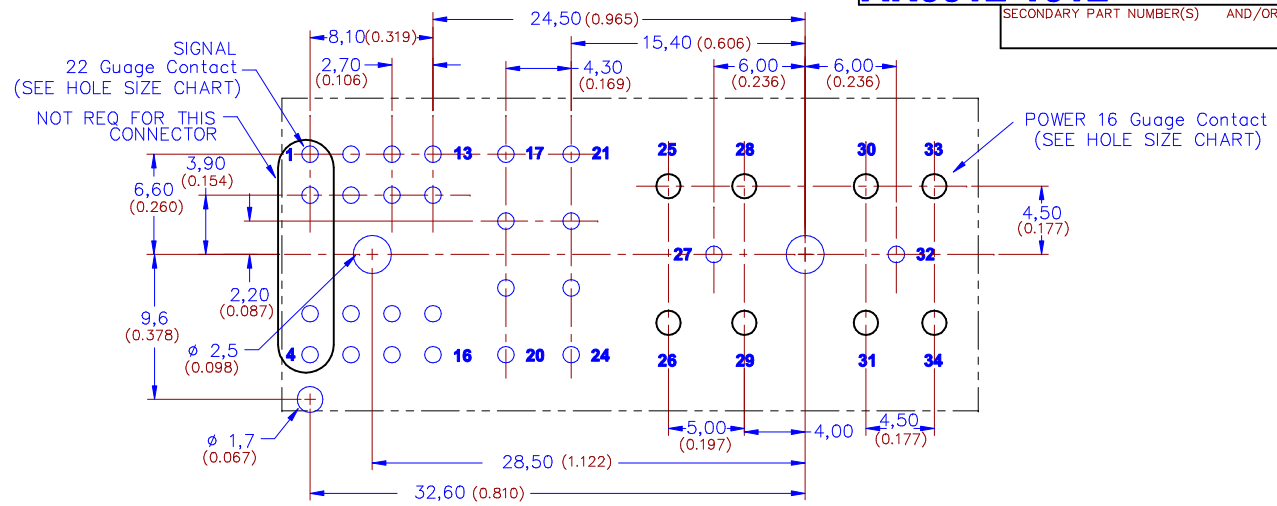
LOADING CODE  
 (-1011 PARTIAL LOADED / RoHS COMPLIANT)

CONNECTOR SERIES (AR0010 - ATCA VERT. FEMALE CONNECTOR WITH MOUNTING SCREW HOLES)

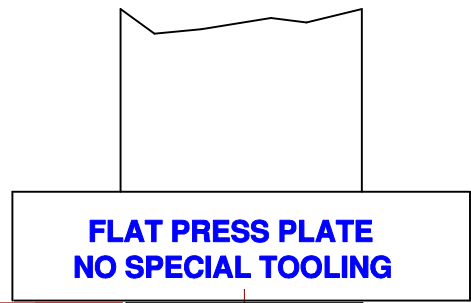


DIMENSIONS ARE IN MILLIMETER AND (INCHES as REFERENCE ONLY) TOLERANCES UNLESS OTHERWISE SPECIFIED X.X = ±0.3 X.XX = ±0.15 ANGLES = ±2'		COMPONENT EQUIPMENT CO., INC. <b>CECO</b> 3050 Camino Del Sol Oxnard, CA 93030 (805)484-0149 FAX (805)388-2849	
THIS DRAWING IS COMPUTER GENERATED NOT TO BE MANUALLY UPDATED.		DATE 06/24/2008	DRAWN S. BLAISE
THIS DRAWING AND / OR SPECIFICATION IS THE PROPERTY OF COMPONENT EQUIPMENT COMPANY, INC. IT IS ISSUED IN STRICT CONFIDENCE, AND SHALL NOT BE REPRODUCED, OR COPIED, OR DISCLOSED TO OTHERS, OR USED AS THE BASIS FOR THE MANUFACTURE OR SALE OF APPARATUS WITHOUT THE PERMISSION OF THE OWNER.		SCALE 2:1 AND NOTED	CHECKED
TITLE ATCA VERTICAL FEMALE PRESSFIT CONN. w/ ADV. P.O.C. w/ MOUNTING SCREW HOLES, RoHS		CUSTOMER / PART NUMBER	REV. CAGE CODE
DRAWING NO. AR004_a		SHEET 1 OF 2	REV. A

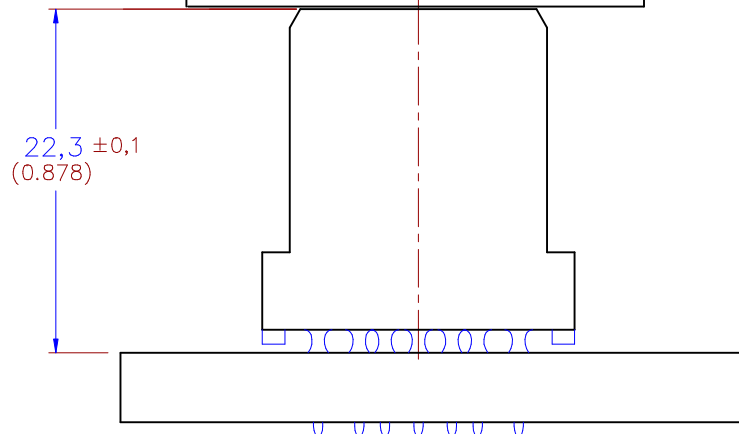




**PCB HOLE LAYOUT**  
 (FRONT SIDE)



**FLAT PRESS PLATE**  
**NO SPECIAL TOOLING**

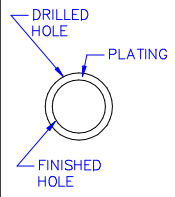


**TYPICAL FLAT ROCK INSTALLATION**  
 (END VIEW)

NOTE: DO NOT OVER PRESS USE A PRESS STOP!

**PCB HOLE SIZE CHART**

SIGNAL 22 Gauge Contact	
<b>OPTIONAL FINISHED PCB HOLE SIZES</b>	<b>DRILL SIZE</b>
(A) $\varnothing 1.04 \pm 0.05$ (0.041 ± 0.002)	$\varnothing 1.15 \pm 0.05$ (0.045 ± 0.002)
(B) $\varnothing 1.09 \pm 0.05$ (0.043 ± 0.002)	$\varnothing 1.19 \pm 0.05$ (0.046 ± 0.002)
POWER 16 Gauge Contact	
<b>OPTIONAL FINISHED PCB HOLE SIZES</b>	<b>DRILL SIZE</b>
$\varnothing 1.600 + 0.090 - 0.060$ (0.063 + 0.0035 - 0.0024)	$\varnothing 1.73 \pm 0.05$ (0.068 ± 0.002)



**OPTIONAL PCB HOLE PLATING**

PLATING TYPE	PLATING THICKNESSES
Immersion Tin	a) $0.85 \mu \pm 0.15 \mu$ (0.000033 ± 0.000006) Immersion Tin over 25 $\mu$ (0.0010) min. copper
Immersion Gold over Nickel	b) $0.05 \mu$ (0.000002) min. Gold $4.5 \mu \pm 1.5 \mu$ (0.000177 ± 0.000059) over 25 $\mu$ (0.0010) min. Copper
Immersion Silver	c) $0.34 \mu \pm 0.17 \mu$ (0.000013 ± 0.000007) Silver over 25 $\mu$ (0.0010) min. Copper

**PART NUMBER DESCRIPTION**

SERIES PREFIX: **AR**  
 LOADING CODE SUFFIX: **0012**  
**AR0012-1012**

LOADING CODE  
 (-1011 PARTIAL LOADED / RoHS COMPLIANT)

CONNECTOR SERIES (AR0010 - ATCA VERT. FEMALE CONNECTOR WITH MOUNTING SCREW HOLES)

DIMENSIONS ARE IN MILLIMETER AND (INCHES as REFERENCE ONLY)  
 TOLERANCES UNLESS OTHERWISE SPECIFIED  
 X.X = ±0.3 X.XX = ±0.15 ANGLES = ±2°  
 THIS DRAWING IS COMPUTER GENERATED NOT TO BE MANUALLY UPDATED.  
 THIS DRAWING AND / OR SPECIFICATION IS THE PROPERTY OF COMPONENT EQUIPMENT COMPANY, INC. IT IS ISSUED IN STRICT CONFIDENCE, AND SHALL NOT BE REPRODUCED, OR COPIED, OR DISCLOSED TO OTHERS, OR USED AS THE BASIS FOR THE MANUFACTURE OR SALE OF APPARATUS WITHOUT THE PERMISSION OF THE OWNER.

COMPONENT EQUIPMENT CO., INC.  
**CECO** 3050 Camino Del Sol  
 Oxnard, CA 93030  
 (805)484-0149 FAX (805)388-2849

DATE: 03/01/2006 DRAWN: S. BLAISE APPROVED: T.C.  
 SCALE: 2:1 AND NOTED CHECKED: APPROVED

TITLE: ATCA VERTICAL FEMALE PRESSFIT CONNECTOR WITH MOUNTING SCREW HOLES, RoHS COMPLIANT DWG SIZE: **A1**  
 CUSTOMER / PART NUMBER: REV. CAGE CODE: SHEET 2 OF 2 REV. DRAWING NO. AR001\_a

**ORMS7**

